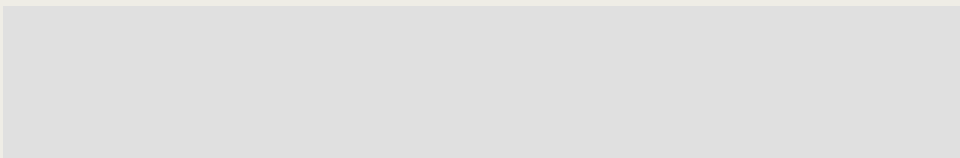
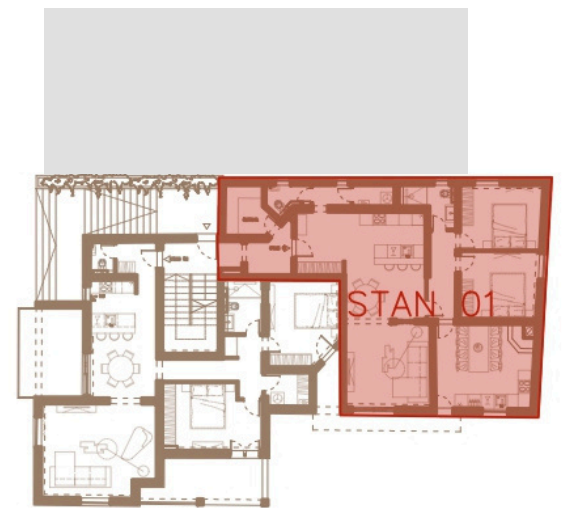
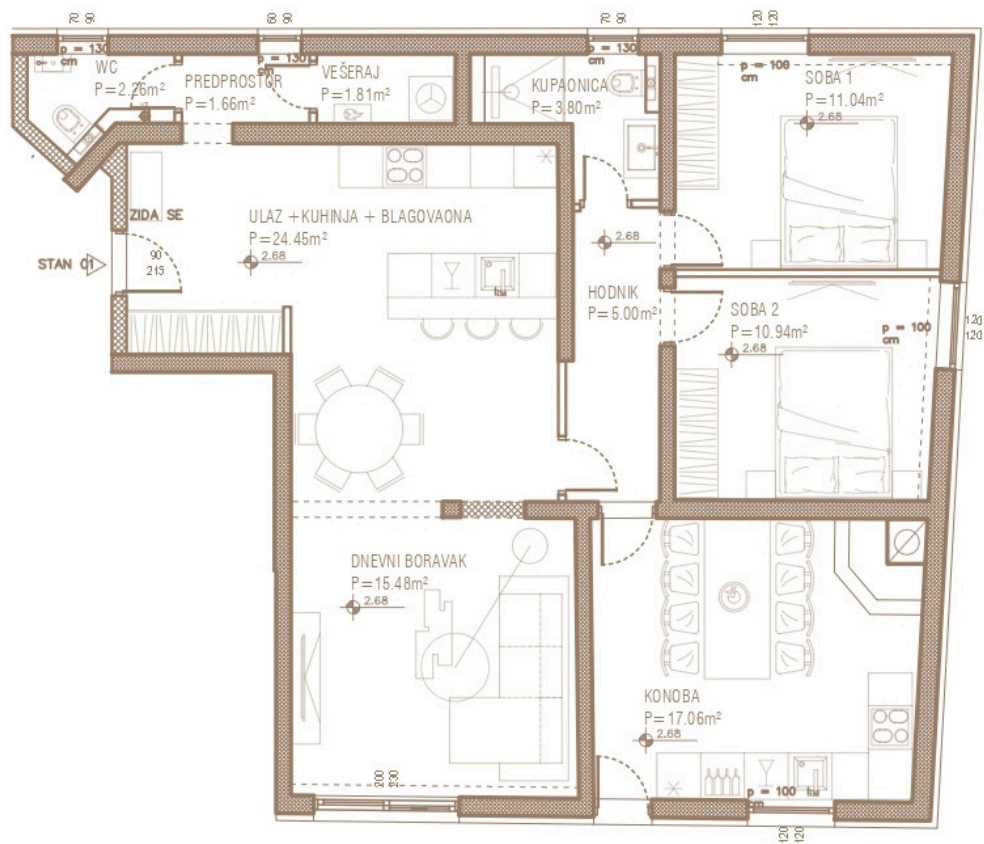




Katalog stanova

stambene zgrade





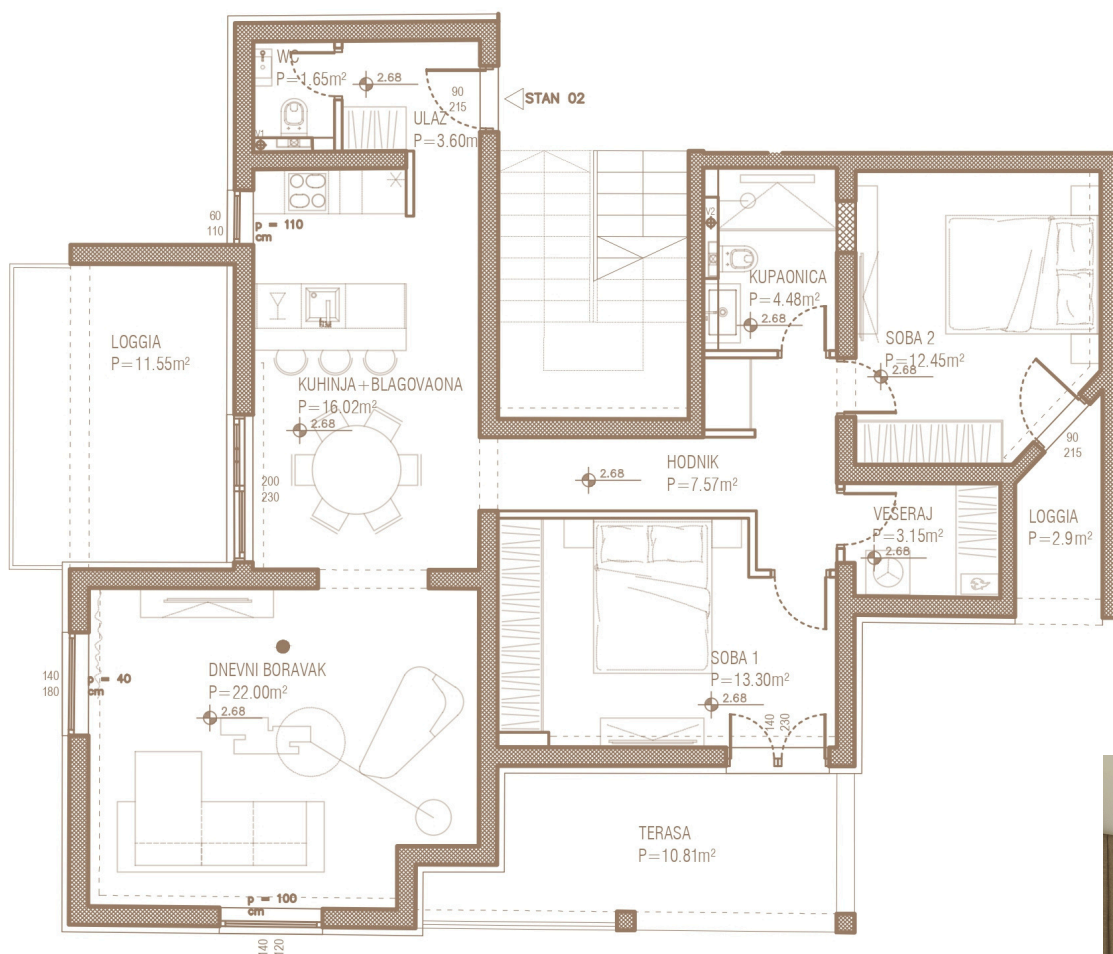
pozicija stana 01 u prizemlju

Stan 1



TROSOBAN STAN_PRIZEMLJE

stan/prostorija	netto površina (m2)	netto obračunata površina (m2)
ulaz / bl/ kh	24,45m2	24,45m2
wc	2,26m2	2,26m2
predprostor	1,66m2	1,66m2
vešeraj	1,81m2	1,81m2
dn. boravak	15,48m2	15,48m2
hodnik	5,00m2	5,00m2
konoba	17,06m2	17,06m2
soba 1	11,04m2	11,04m2
soba 2	10,94m2	10,94m2
kupaona	3,80m2	3,80m2
UKUPNO zatvoreni prostor	93,5m2	93,5m2
STAN UKUPNO	93,5m2	93,5m2



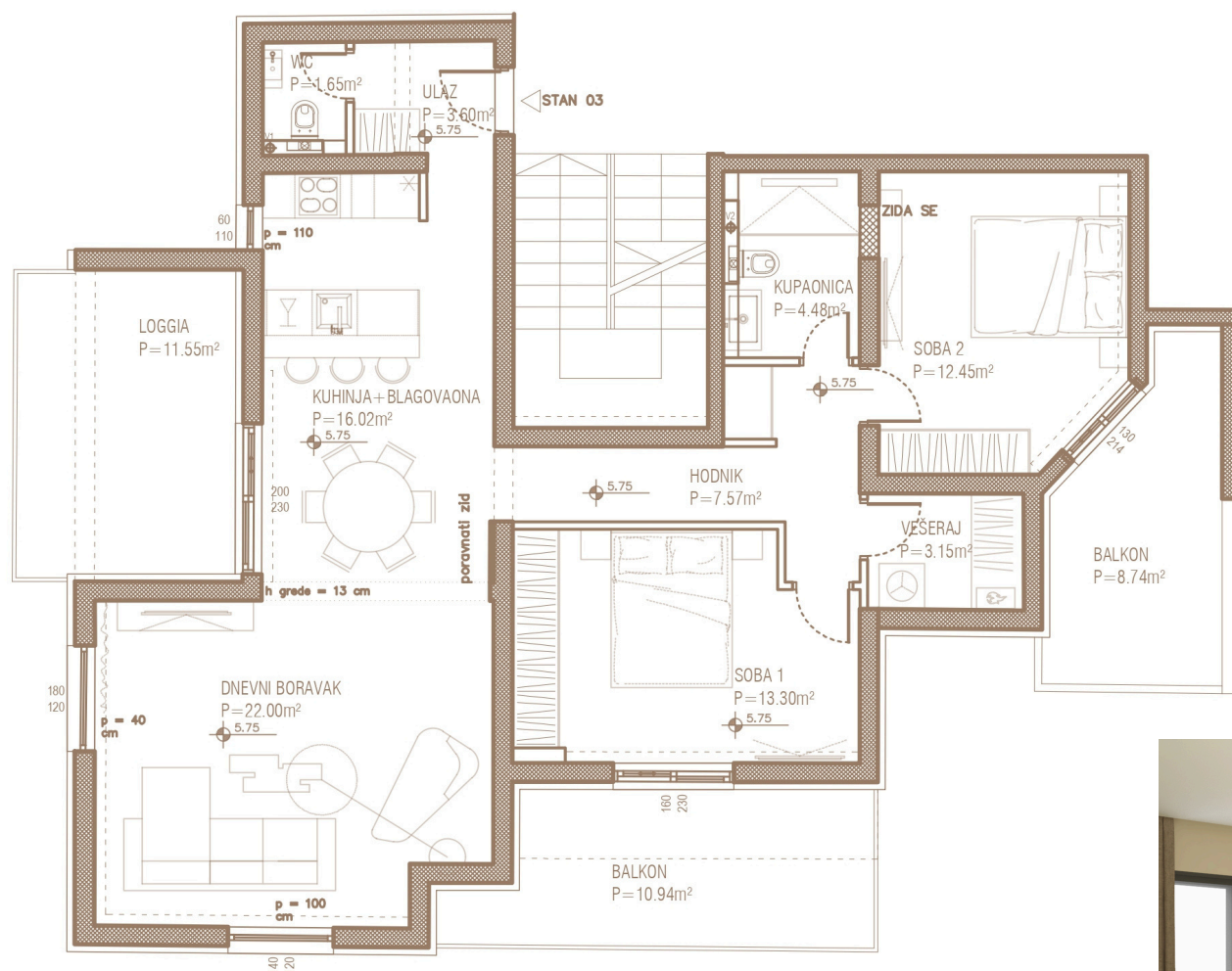
pozicija stana 02 u prizemlju

Stan 2



TROSOBAN STAN_PRIZEMLJE

stan/prostorija	netto površina (m2)	netto obračunata površina (m2)
ulaz	3,60m ²	3,60m ²
wc	1,65m ²	1,65m ²
bl/ kh	16,02m ²	16,02m ²
dn. boravak	22,00m ²	22,00m ²
hodnik	7,57m ²	7,57m ²
soba 1	13,30m ²	13,30m ²
soba 2	12,45m ²	12,45m ²
vešeraj	3,15m ²	3,15m ²
kupaonica	4,48m ²	4,48m ²
UKUPNO zatvoreni prostor	84,22m²	84,22m²
loggia 1	11,55m ²	7,97m ²
loggia 2	2,90m ²	2,18m ²
terasa	10,81m ²	2,70m ²
STAN UKUPNO	109,26m²	97,07m²

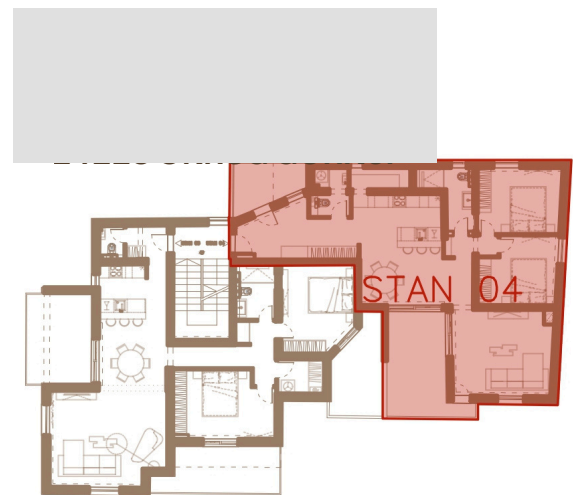
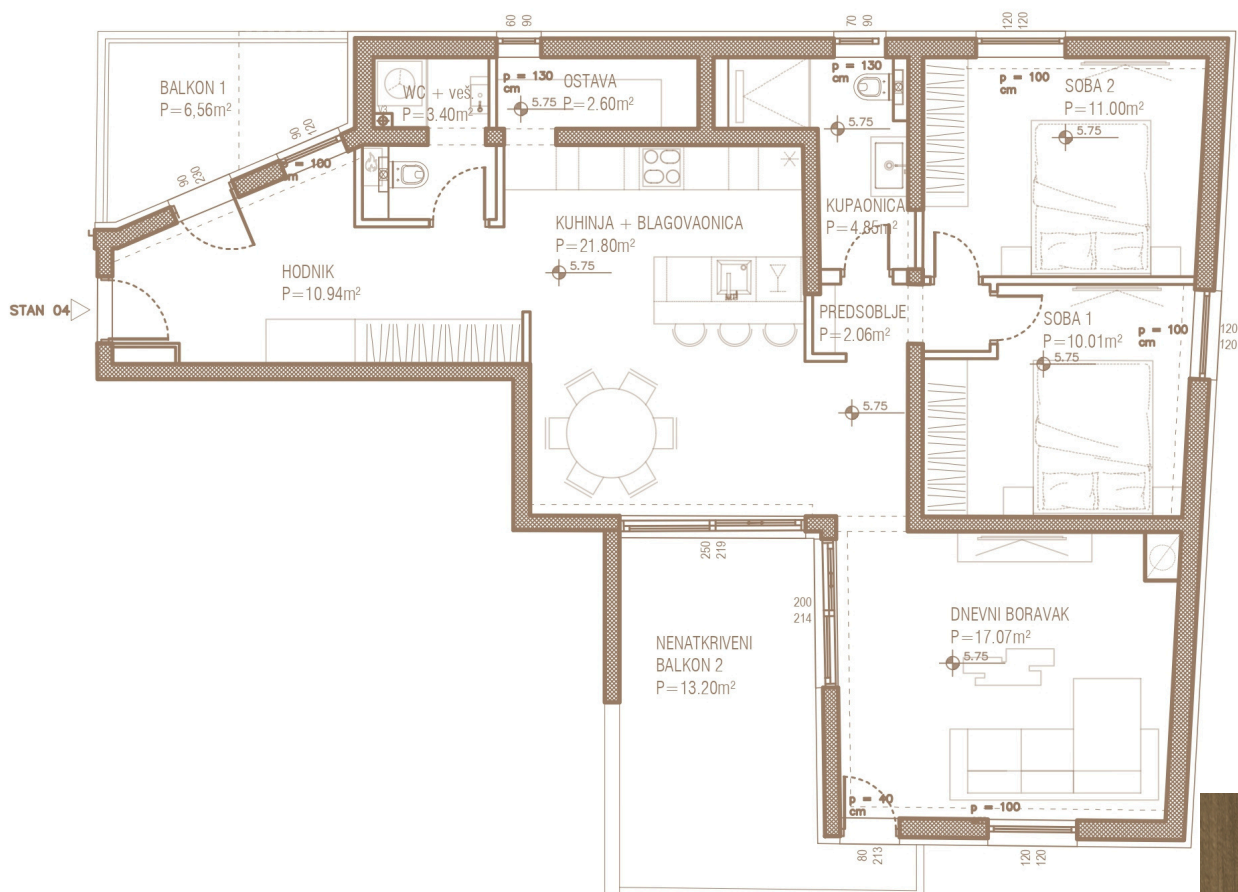


Stan 3

TROSOBAN STAN_PRVI KAT

stan/prostorija	netto površina (m2)	netto obračunata površina (m2)
ulaz	3,60m2	3,60m2
wc	1,65m2	1,65m2
bl/ kh	16,02m2	16,02m2
dn. boravak	22,00m2	22,00m2
hodnik	7,57m2	7,57m2
soba 1	13,30m2	13,30m2
soba 2	12,45m2	12,45m2
vešeraj	3,15m2	3,15m2
kupaonica	4,48m2	4,48m2
UKUPNO zatvoreni prostor	84,22m2	84,22m2
loggia	11,55m2	7,97m2
balkon 1	10,94m2	3,66m2
balkon 2	8,74m2	2,19m2
STAN UKUPNO	115,45m2	98,04m2





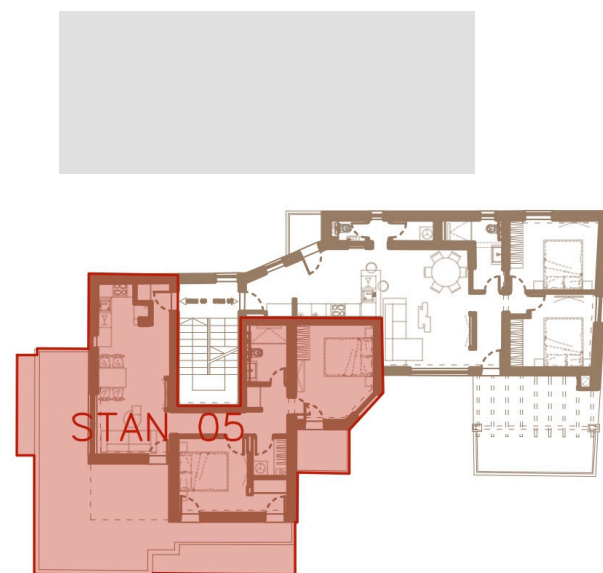
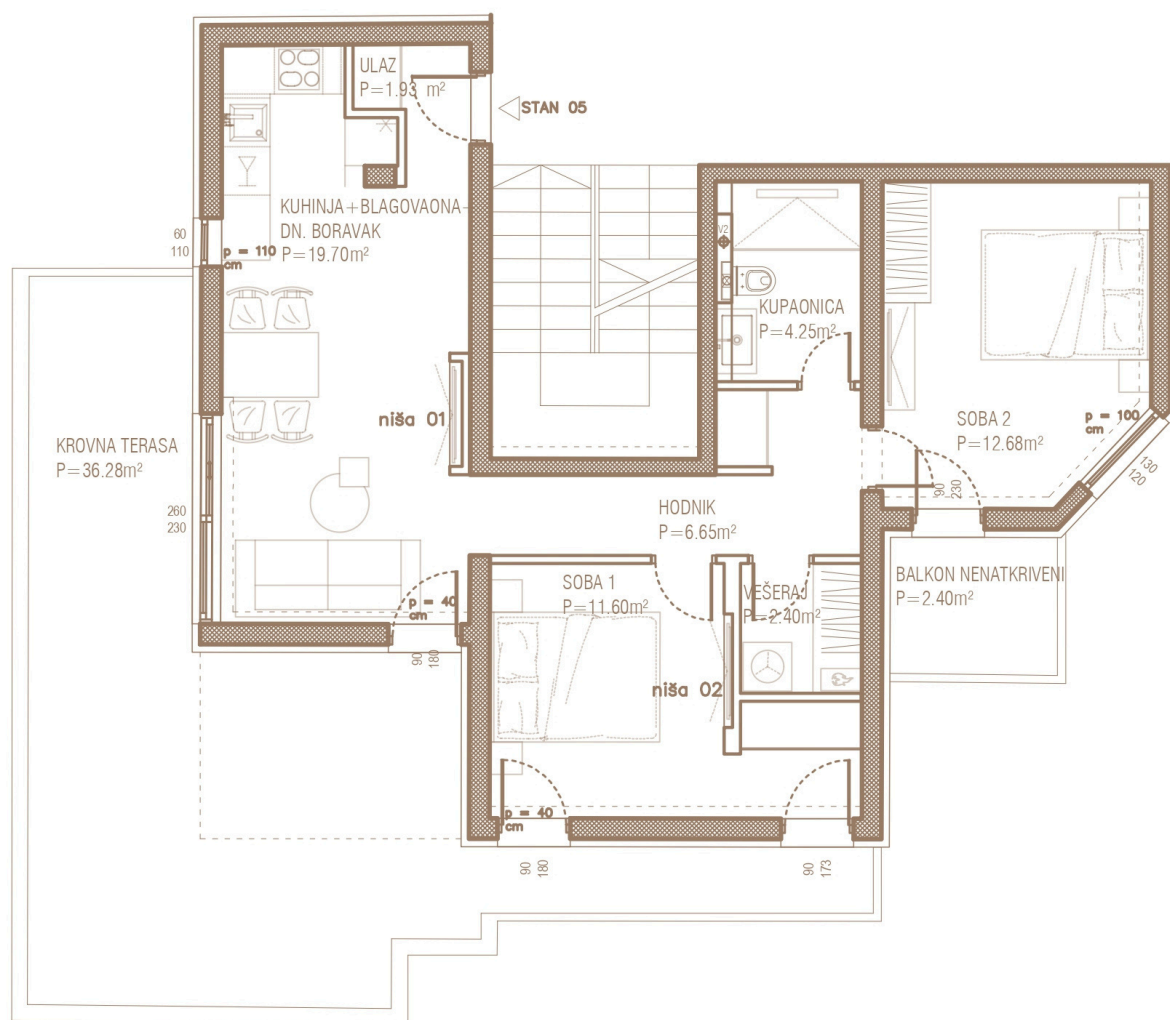
pozicija stana 04 na prvom katu

Stan 4



TROSOBAN STAN_PRVI KAT

stan/prostorija	netto površina (m2)	netto obračunata površina (m2)
ulaz / hodnik	10,94m2	10,94m2
wc + veš.	3,40m2	3,40m2
bl/ kh	21,80m2	21,80m2
ostava	2,60m2	2,60m2
dn. boravak	17,07m2	17,07m2
predsoblje	2,06m2	2,06m2
soba 1	10,01m2	10,01m2
soba 2	11,00m2	11,00m2
kupaonica	4,85m2	4,85m2
UKUPNO zatvoreni prostor	83,73m2	83,73m2
balkon 1	6,56m2	2,21m2
balkon 2	13,20m2	3,30m2
STAN UKUPNO	103,49m2	89,24m2



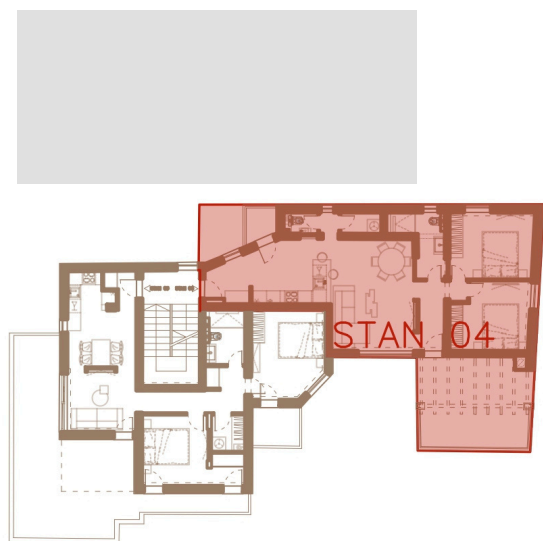
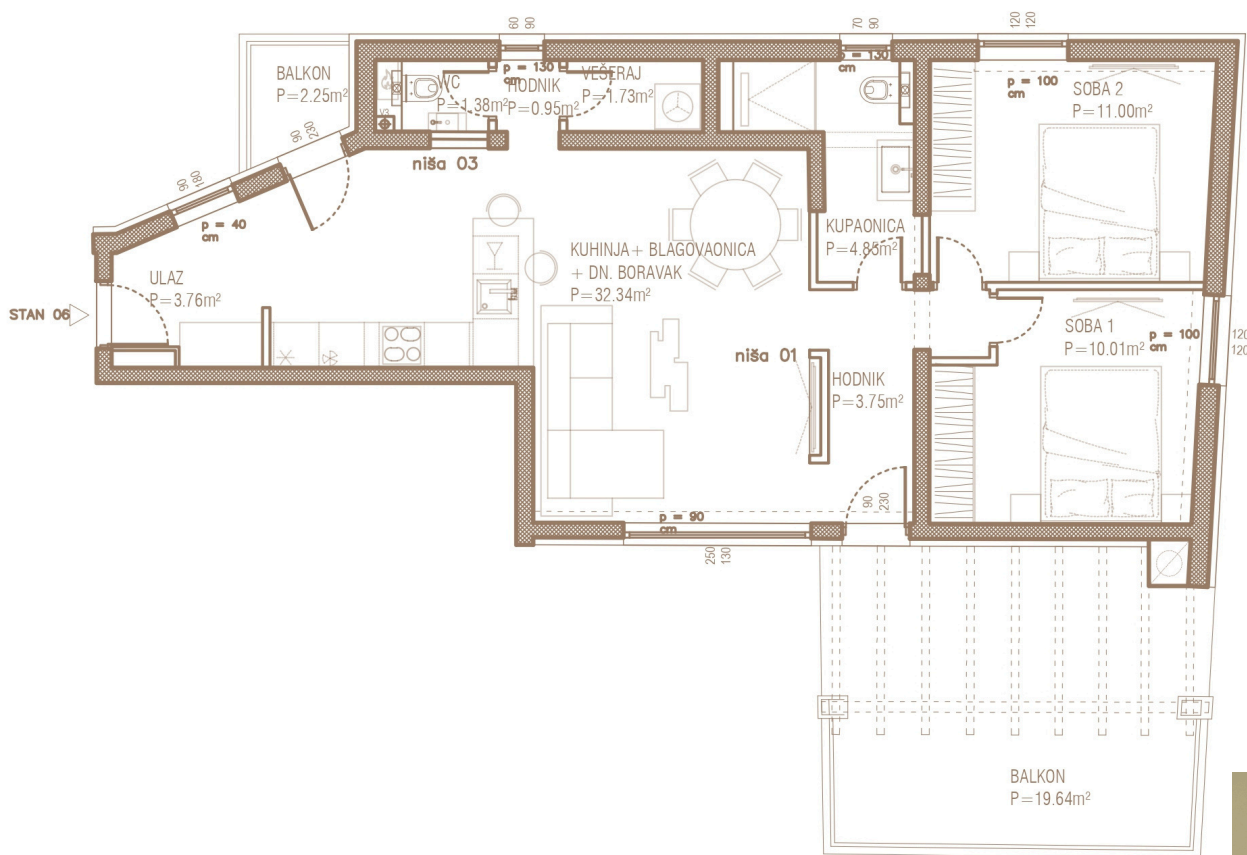
pozicija stana 05 na drugom katu

Stan 5

TROSOBAN STAN_DRUGI KAT

stan/prostorija	netto površina (m2)	netto obračunata površina (m2)
ulaz	1,93m2	1,93m2
bl/ kh/dn boravak	19,70m2	19,70m2
hodnik	6,65m2	6,65m2
soba 1	11,06m2	11,06m2
soba 2	12,68m2	12,68m2
vešeraj	2,40m2	2,40m2
kupaonica	4,25m2	4,25m2
UKUPNO zatvoreni prostor	58,56m2	58,56m2
krovna terasa	36,28m2	9,07m2
balkon 2	2,40m2	0,6m2
STAN UKUPNO	97,24m2	68,23m2





pozicija stana 06 na drugom katu

Stan 6

TROSOBAN STAN_DRUGI KAT

stan/prostorija	netto površina (m2)	netto obračunata površina (m2)
ulaz	3,76m2	3,76m2
bl/ kuh / dn. b.	32,34m2	32,34m2
predprostor	0,95m2	0,95m2
wc	1,38m2	1,38m2
vešeraj	1,73m2	1,73m2
hodnik	3,35m2	3,35m2
soba 1	10,01m2	10,01m2
soba 2	11,00m2	11,00m2
kupaonica	4,85m2	4,85m2
UKUPNO zatvoreni prostor	66,02m2	66,02m2
balkon 1	2,25m2	0,56m2
balkon 2	19,64m2	4,91m2
STAN UKUPNO	87,91m2	71,49m2

